



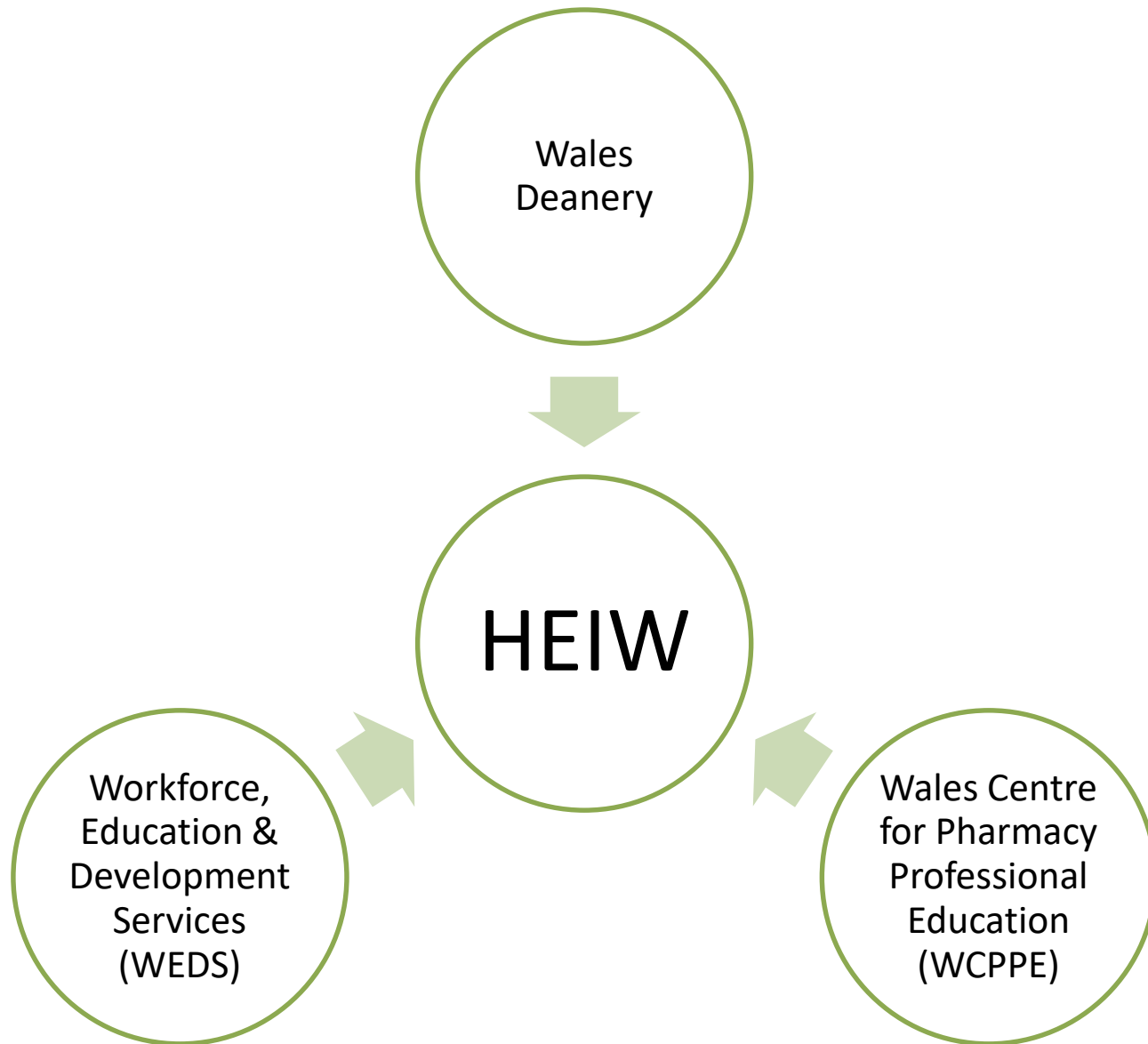
NHS Wales Careers

Sharon Evans, Careers Officer
Workforce, Education & Development Services

Contents

- Health Education and Improvement Wales (HEIW)
- NHS Wales Careers & Widening Access Function
- Key policies





Key facts: *Transforming the workforce for a healthier Wales...*

- Over 400 core members of staff;
- Work with over 1,800 medical and dental trainers and mentors, based in primary and secondary care;
- Offer over 50 different medical training programmes across foundation and specialty;
- Operate 12 district GP training schemes in Wales;
- Promote over 350 different careers in NHS Wales;
- Support the CPD of the workforce across a range of teaching methods...



Key facts: *Transforming the workforce for a healthier Wales* (continued)...

- At any one time we are working with NHS colleagues to support:
 - 3,000 training-grade doctors and dentists across Wales;
 - Approximately 9500 students/trainees across 60 professions over a 3-year period via Health Professional Education and Training budget. More than 4000 pharmacists and pharmacy technicians in Wales.
 - About 700 optometrists to deliver enhanced eye care services to patients in primary care.



Core Functions

1. Workforce Intelligence
2. Workforce Planning
3. Education Commissioning
4. Quality Improvement
5. Supporting Regulation
6. Leadership Development
7. Careers & Widening Access
8. Workforce Improvement
9. Professional support for W&OD in NHS Wales



Workforce: Information, Planning & Transformation

- Organisations plan their workforce
- Integrated Medium Term Plans (IMTP)
- ESR tools
- All Wales Delegation Guidelines
- Framework for Advance Practitioners
- Physician Associate



Education Commissioning & Contracting

- NHS funded courses which lead to professional registration
- Nursing, midwifery, allied health professions, dental courses
- Healthcare science: PTP, STP and HSST
- Part time degree for nursing
- Return to practice



NHS Wales Bursary Schemes

- The full NHS Wales Bursary scheme includes:
 - the cost of tuition fees
 - a bursary for living costs, including:
 - a £1,000 non means tested grant
 - a means tested bursary
 - travel, accommodation (whilst on placement), Childcare, Disabled Student Allowance, Dependents Allowance and Parental Learning Allowance.
- If eligible, you will have access to a reduced student loan
- Details of the specific courses can be found at:
<http://www.nwssp.wales.nhs.uk/education-commis-and-contracting>



Wales Health Student Forum (WHSF)



- Brings together healthcare students.
- Gives students a “voice” to raise pertinent education issues with the Education Commissioner, policy makers, education providers and fellow students.
- Works in partnership with universities and is affiliated with a number of groups such as NUS Wales and Student Quality Ambassadors.



Careers & Widening Access

HEIW will provide the strategic direction for health careers and the widening access agenda, delivering an ongoing agenda to promote health careers.



Careers & Widening Access Team

Julie Roger

Deputy CEO and Director of Workforce & OD

Angie Oliver

Deputy Director of Workforce & OD

Head of Careers

Vacant

Careers Manager

Vacant

Sharon Evans
Careers Officer

Rachel Mort
Careers Adviser



NHS Wales Careers

Over
350 roles
within the
NHS

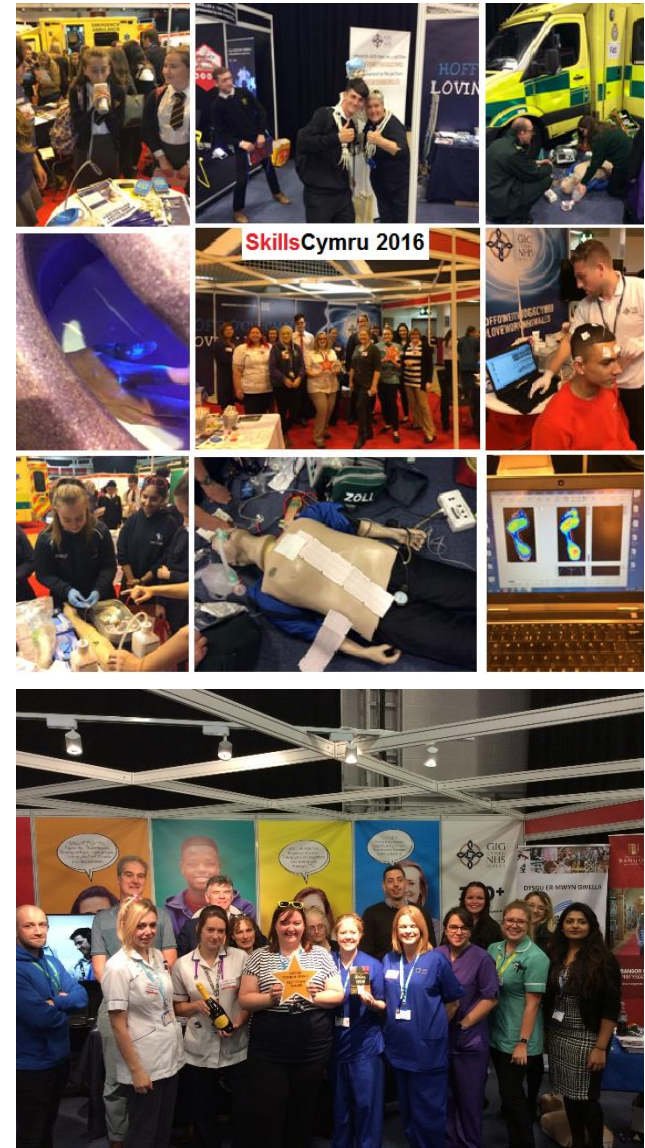


NHS Wales Careers Network



SkillsCymru

- Exhibited for the last four years
- Winner of most engaging stand 2016 & 17
- We're there again this year!
 - South Wales: 9th & 10th Oct, Motorpoint Arena
 - North Wales: 16th & 17th Oct, Venue Cymru



Webinars




- Working with the CDI to deliver a series of 6 webinars:
 1. 05.07.18 - General overview of NHS Wales Careers
 2. 19.10.18 - NHS Wales: supporting a future career through vocational pathways
 3. 21.11.18 - NHS Wales: Why we're passionate about technology, systems, and information
 4. 05.02.19 - Estates & Facilities
 5. February 2019 - AHPs, Healthcare Science & Pharmacy
 6. March 2019 - Nursing, Medicine & Physician Associate



Website

Skip navigation | Feedback | Site map | Document map | A-Z list | Accessibility | Cymraeg

Font size A A A



Gyrfaoedd Careers

Gwasanaethau Gweithlu, Addysg a Datblygu
Workforce, Education and Development Services

Home
NHS Wales Careers

Home > Physiotherapist

Search Go

Physiotherapist



We really value your feedback

Your comments and suggestions on our services and facilities are welcomed and will help us provide the best customer service possible. If you do have any feedback or questions please contact us at:
shared.services@wales.nhs.uk



What is a physiotherapist?

Physiotherapists support people to stay independent and restore movement and function when someone is affected by an injury or illness. Physiotherapy is the patient's involvement in their own recovery and participation.

Is physiotherapy the right career for me?

Physiotherapy is a science-based profession so you will need to be good at health science.

Skip navigation | Feedback | Site map | Document map | A-Z list | Accessibility | Cymraeg

Font size A A A



Gyrfaoedd Careers

Gwasanaethau Gweithlu, Addysg a Datblygu
Workforce, Education and Development Services

Home
NHS Wales Careers

Home > Teachers, Advisers and Work Coaches

Search Go

Teachers, Advisers and Work Coaches



We really value your feedback

Your comments and suggestions on our services and facilities are welcomed and will help us provide the best customer service possible. If you do have any feedback or questions please contact us at:
shared.services@wales.nhs.uk



With more than 350 health roles there is likely to be something of interest for everyone exploring their career options. Throughout the NHS Wales Careers website, you'll find a range of resources, tools and tips to help you offer advice, information and guidance to your students/dients.

The following sections may be of particular interest to you:

- Our roles section provides information about the wide variety of roles available in health.
- Our courses section will provide information about the various courses that will support your student/dient in whatever route they choose. There is also information about available funding for courses leading to professional registration in our finance section.



Social Media



facebook

Email or Phone Password Log In

Forgotten account?

NHS Wales Careers
@NHSWalesCareers

Home

This is Wales.

NHS Wales Careers
@nhswalescareers

Careers information service for NHS Wales. trainworklive.wales

Wales
trainworklive.wales
Joined February 2013

Tweets **1,682** Following **736** Followers **2,000**

Tweets Tweets & replies

NHS Wales Careers @nhswalescareers
Do you have any questions? We're happy to answer them!

Email: enquiries@trainworklive.wales
Visit: trainworklive.wales

#TrainWorkLive #NHS

Home Moments Search Twitter Have an account? Log In

Health Education and Improvement Wales (HEIW)
@HEIW_NHS

Tweets **610** Following **497** Followers **1,796** Likes **1,095**

Follow

Send Message

Search for posts on this Page

NHS Wales Careers
Official company in Brecon

Community
761 people like this

Health Education and Improvement Wales (HEIW)
@HEIW_NHS

Planning, developing, shaping, educating & training the health workforce of today & tomorrow. Newest member of NHS Wales as of 1st Oct 18 Cymraeg: @AAGC_GIG

Tweets Tweets & replies Media

See 1 new Tweet

Health Education and Improvement Wales (HEIW) @HEIW_NHS · 2h
Brilliant! 🌟🌟🌟

Ian Collings @DrICollings
Fantastic day interviewing the class of 2019 Welsh Clinical Leadership Fellows! What an inspirational & innovative bunch! The future of the NHS is bright in their hands! @WeshFellows @HEIW_Deans @HEIW_NHS @pushmangat @EDPeriatweet@an @DrLowEivans

New to Twitter?
Sign up now to get your own personalised timeline!

Sign up

Worldwide trends
#BlueMonday
36.1k Tweets



A World of Opportunity

- Work experience
- Volunteering



Keep up-to-date



NHS Wales Careers



@nhswarecareers & @HEIW_NHS



www.nhswarecareers.com



nhswarecareers@wales.nhs.uk

