

# Careers and destinations guidance

for your whole school



## Contact us

E [info@morrisby.com](mailto:info@morrisby.com) T +44 (0)330 500 5000 W [morrisby.com](http://morrisby.com)



# The Morrisby Profile

## Identifying potential for over half a century

Morrisby has delivered personalised guidance to millions of young people worldwide for nearly 60 years, using a unique set of psychometric assessments – the Morrisby Profile.

### Key Features

- ✓ Combines our scientifically normed and objective Aptitude assessments (verbal, numerical, spatial, abstract, mechanical) with our Aspirations and Personality questionnaires.
- ✓ Measures strengths and underlying potential, not acquired skill or knowledge, and is not unduly influenced by educational or social background, so raises aspirations.
- ✓ Provides a comprehensive outline of a person's intellectual make-up as well as the way in which their abilities are put to use.
- ✓ Is used to generate career and subject suggestions that are personalised to the candidate based on their results, allowing them to explore options and opportunities that best fit their innate abilities, their interests and personality.
- ✓ Comes with a "log-in for life" allowing users to go back to their account and explore new career suggestions and course options throughout their working life.



# Careers and Destinations Platform

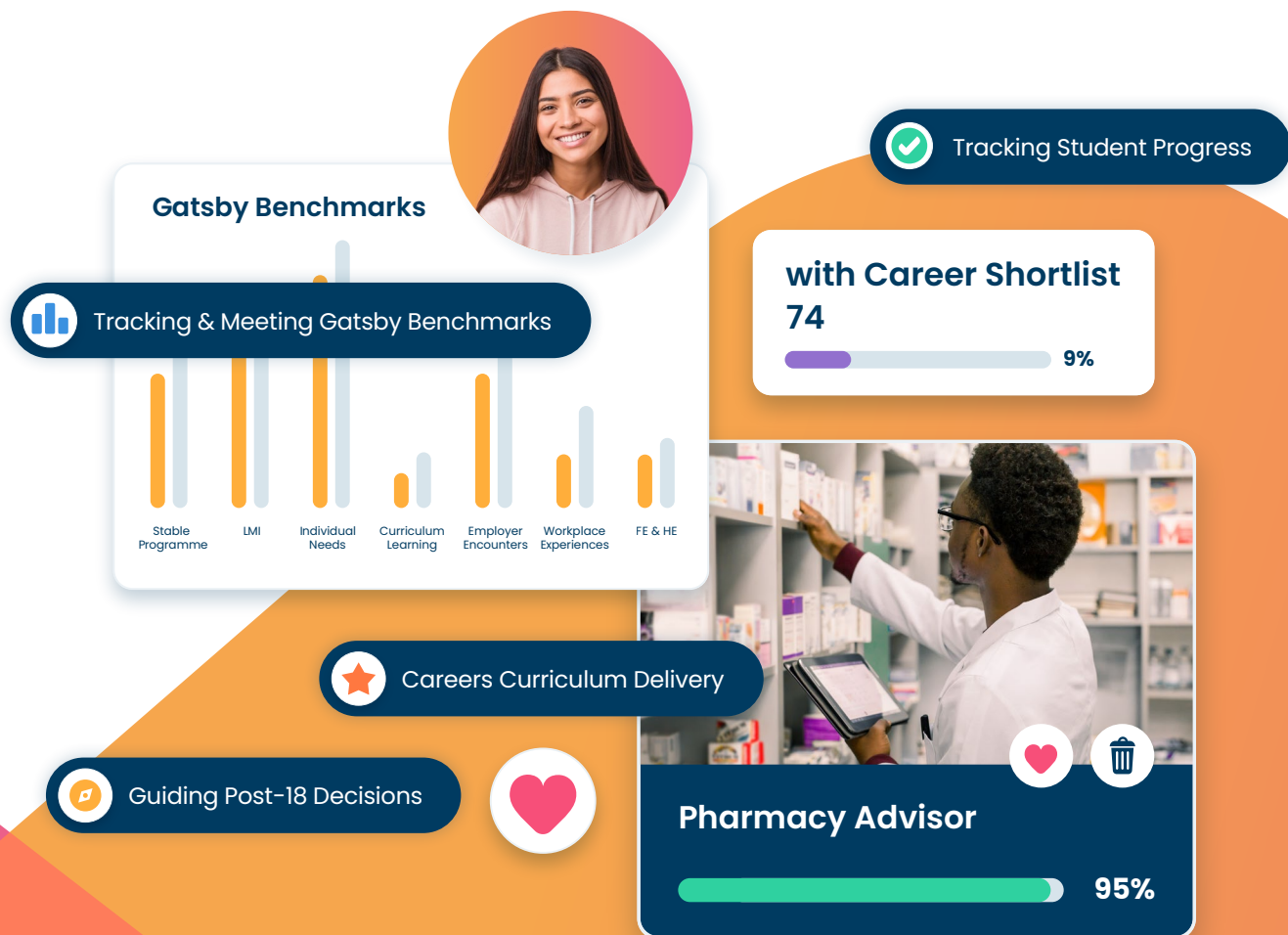
## Careers, subject and destinations guidance made simple

A comprehensive way for schools to manage their delivery of careers education.

Morrisby Profile credits now included within each platform licence

### Key Features

- ✓ Comprehensive careers library with detailed overviews and labour market information.
- ✓ Lesson plans mapped to CDI framework, PHSE curriculum, Skills Builder and Gatsby Benchmarks.
- ✓ Skills Builder activities to track development of Essential Skills.
- ✓ Gatsby Benchmarks tracking.
- ✓ Supports the full UCAS process.
- ✓ Compass+ integration.
- ✓ University Course search from higher education institutions in the UK, Ireland and across Europe.
- ✓ UCAS tools suite to help Heads of Sixth/UCAS coordinators manage the UCAS application process.
- ✓ Destinations post-18 tools to help young people navigate life after secondary or further education.



Find out more at [www.morrisby.com/solutions](http://www.morrisby.com/solutions)

# Choose your plan

## Essentials

**£695\***

Billed Annually

### Careers and destinations platform for ages 11-16

- ✓ 20 Morrisby Profile Credits\*\*
- ✓ Aspirations & Priorities questionnaires
- ✓ Personality & Study Interests questionnaires
- ✓ Careers Library (700+ profiles)
- ✓ Labour Market Information
- ✓ Lesson Plans x110 (age 11-16)
- ✓ Careers Plan Builder
- ✓ Options at 13/14 and 16
- ✓ Careers Suggestions
- ✓ Gatsby Benchmarks Reporting
- ✓ SkillsBuilder Tracking
- ✓ Compass+ Export
- ✓ Learner Passport
- ✓ University Course Search
- ✓ Destinations Post 18
- ✓ Apprenticeships Search
- ✓ Interview Templates & Notes
- ✓ Manager Dashboard

Best Value

## Complete

**£995\***

Billed Annually

### Careers and destinations platform for ages 11-18

#### Everything in Essentials +

- ✓ +20 Profile Credits (40 in total)\*\*
- ✓ Lesson Plans x46 (age 17-18)
- ✓ Predicted Grades Input
- ✓ UCAS Reference Tool
- ✓ Personal Statement Builder
- ✓ Oxbridge Comparison Tool
- ✓ Top 450+ Global University Profiles

\*Prices exclude VAT as per [www.morrisby.com/pricing](http://www.morrisby.com/pricing)

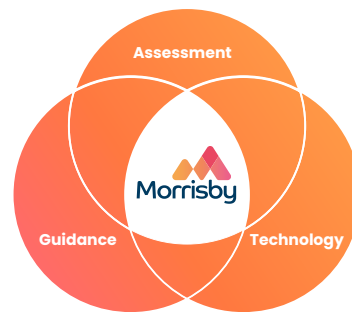
\*\*Additional Morrisby Profile credits can be purchased in all plans for £25 per Profile

## We believe that everyone should have the opportunity to realise a fulfilling future

Since our founding in 1967 we've been using our expertise in assessment, guidance and technology to identify potential and match individuals to their best career and educational opportunities.

We are Matrix-accredited for the delivery of information, advice and guidance, and hold certifications for both ISO 9001 (quality management) and 27001 (information security).

[morrisby.com](http://morrisby.com)



## United by Purpose, Driven by Impact

We are united in our passion for changing lives and building better futures. We believe employee ownership isn't just a model—it's the way forward. Together, we're creating a culture of shared success, accountability, and lasting impact.



## Contact us

E [info@morrisby.com](mailto:info@morrisby.com) T +44 (0)330 500 5000 W [morrisby.com](http://morrisby.com)

